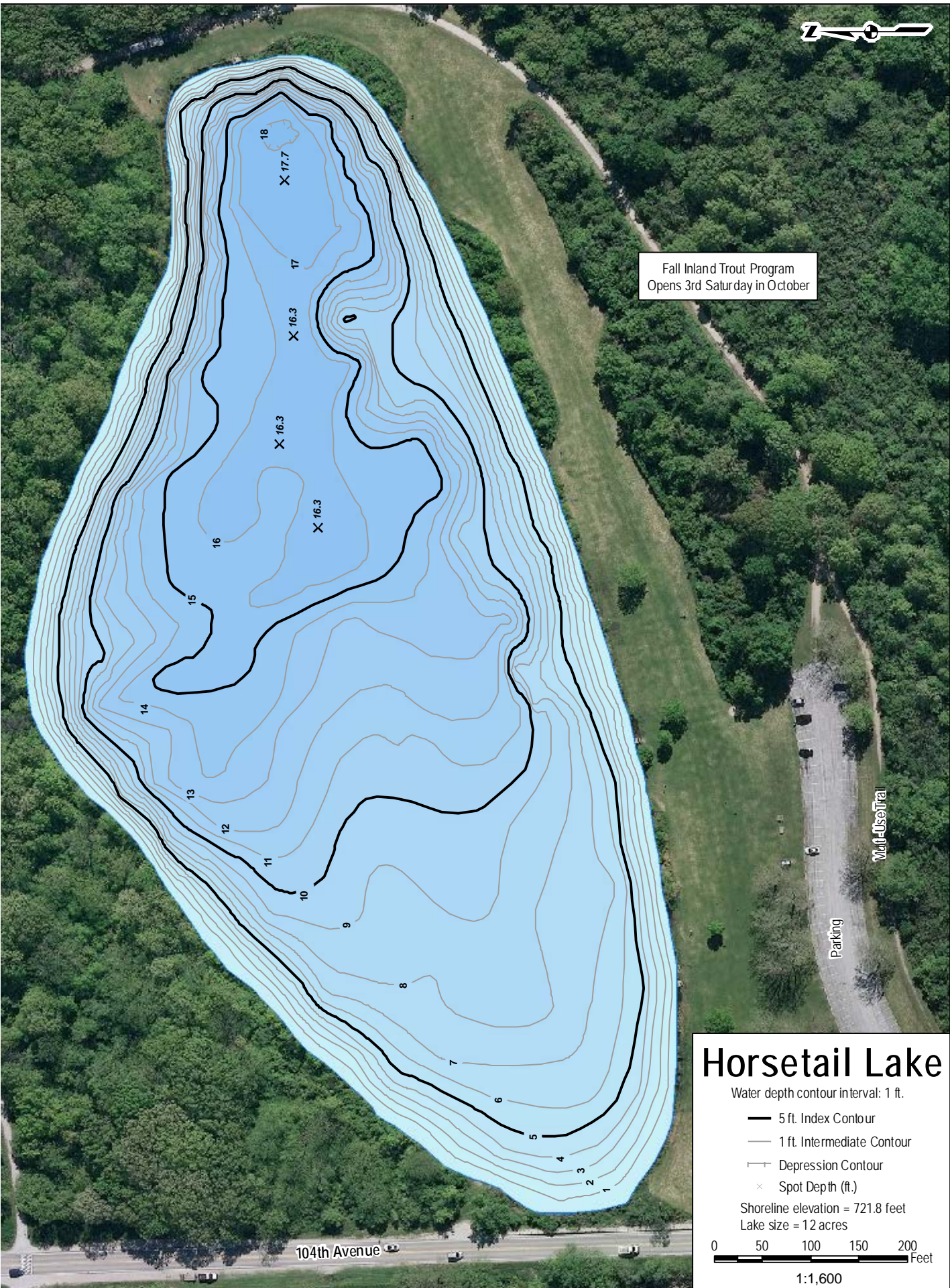




Fall Inland Trout Program
Opens 3rd Saturday in October

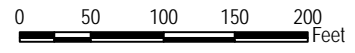


Horsetail Lake

Water depth contour interval: 1 ft.

- 5 ft. Index Contour
- 1 ft. Intermediate Contour
- ⊥ Depression Contour
- × Spot Depth (ft.)

Shoreline elevation = 721.8 feet
Lake size = 12 acres



1:1,600